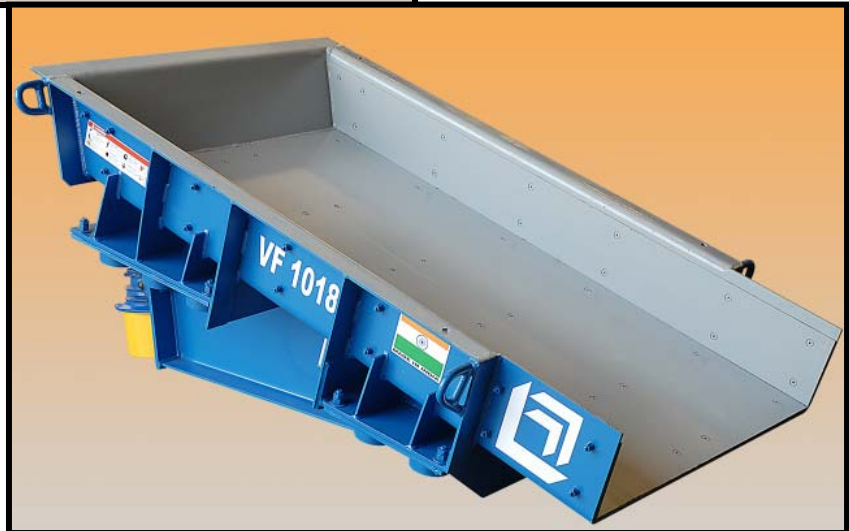


Vibrating Feeder

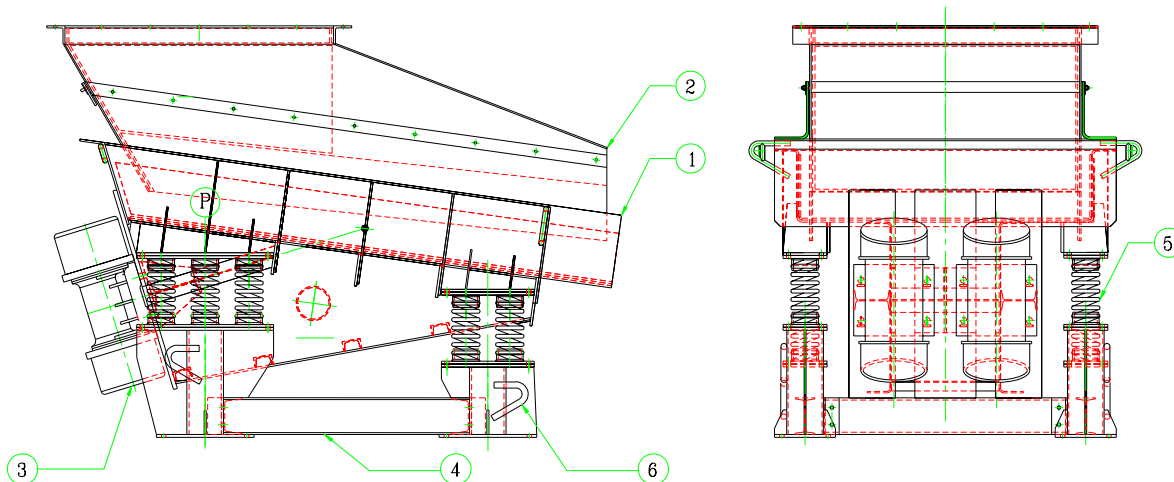
BHP is proud to introduce the **BAZER Range** of Vibrating - Feeders, packed with host of features that make it reliable, robust and easily adjustable to a variety of tough applications in industries like aggregate, mining, cement, steel etc.



Salient features

- Two unbalanced imported electromechanical motors are used to generate linear motion.
- Capacity adjustable by counter weight setting
- Equipped with a rectangular section trough covered with static skirt.
- Special replaceable wear resistant liners.
- Best suited for the extraction of products in bulk from storage bins, hoppers, feeding conveyors etc.
- Excellent service life of the electromechanical motors with little maintenance.

BAZER Range of Vibrating Feeders



Description of Vibrating Feeder Parts:

1. Vibrating Trough Assembly
2. Static Skirt Assembly
3. Electromechanical Vibrator
4. Vibrating Trough Mounting Structure Assembly
5. Helical Coil Spring
6. Hold on Bolts

Model	Size (Width x Length)	Power Rating	Max. Feed Size	Capacity
BAZER VF0815	800 x 1500 mm	2 x 1.3 kW	150 mm	100 - 150 TPH
BAZER VF1018	1000 x 1800 mm	2 x 1.3 kW	200 mm	150 - 250 TPH
BAZER VF1220	1200 x 2000 mm	2 x 2.1 kW	300 mm	250 - 350 TPH

❖ Above capacity is for Aggregate with bulk density of 1.6 T/m³ . However, actual capacity depends on the material and operating parameters in the circuit.

* Designs are subject to modifications and changes at the sole discretion of the manufacturer without any prior notice.



BHP INFRASTRUCTURE (P) LTD.

Plot No.-7, Sector-4, Faridabad, Haryana-121004 India
 Tel: +91(0129) 4282500, 4282501 Fax: +91(0129) 4063042
 www.bazerworld.com Email: bhpcorp@bazerworld.com